



Specialist for Pumping Technology



SWP

Self-priming pump for solids handling applications

For more than 60 years the name Ruhrpumpen™ has been synonymous worldwide with innovation and reliability for pumping technology

Ruhrpumpen is an innovative and efficient centrifugal pump technology company that offers operators of Pump Systems and a wide range of quality products. Ruhrpumpen is committed to global excellence with a complete range of Pumps, Fire Pump Packages and related products, such as Decoking Systems and Tools to support the core markets, namely Oil & Gas, Petrochemical, Power, Heavy Industry Applications, Mining and Water Services.

The broad product line complies with the most demanding quality specifications and goes beyond stringent industry standards such as API, ANSI, Hydraulic Institute, Underwriter's Laboratories, Factory Mutual and ISO 9001.

Ruhrpumpen is a vertically integrated company with its own foundry, machine shop, pump manufacturing plants and service centers. With strategically located manufacturing plants, operating offices and service centers in many parts of the world, Ruhrpumpen is truly a global pump company which also has the strength to focus on the local necessities of each client.

SWP Self Priming Pumps

The SWP line is a self priming pump that can handle clear liquids or with solids. Its large volute design allows automatic repriming in a completely open system without the need for suction or discharge check valves.

These type of pumps are designed to allow an simplified maintenance of the pump with the use of common hand tools and having easy access to its interior parts such as the

impeller and the seal for asimple maintenance therefore reducing operating costs.

These pumps are ideal for waste handling applications and sewage handling applications in industries such as paper, agricultural, construction, automotive, and many others.



**THE SWP PUMPS CAN
LIFT FLUIDS UP TO 27 ft**

Removable Rotating Assembly

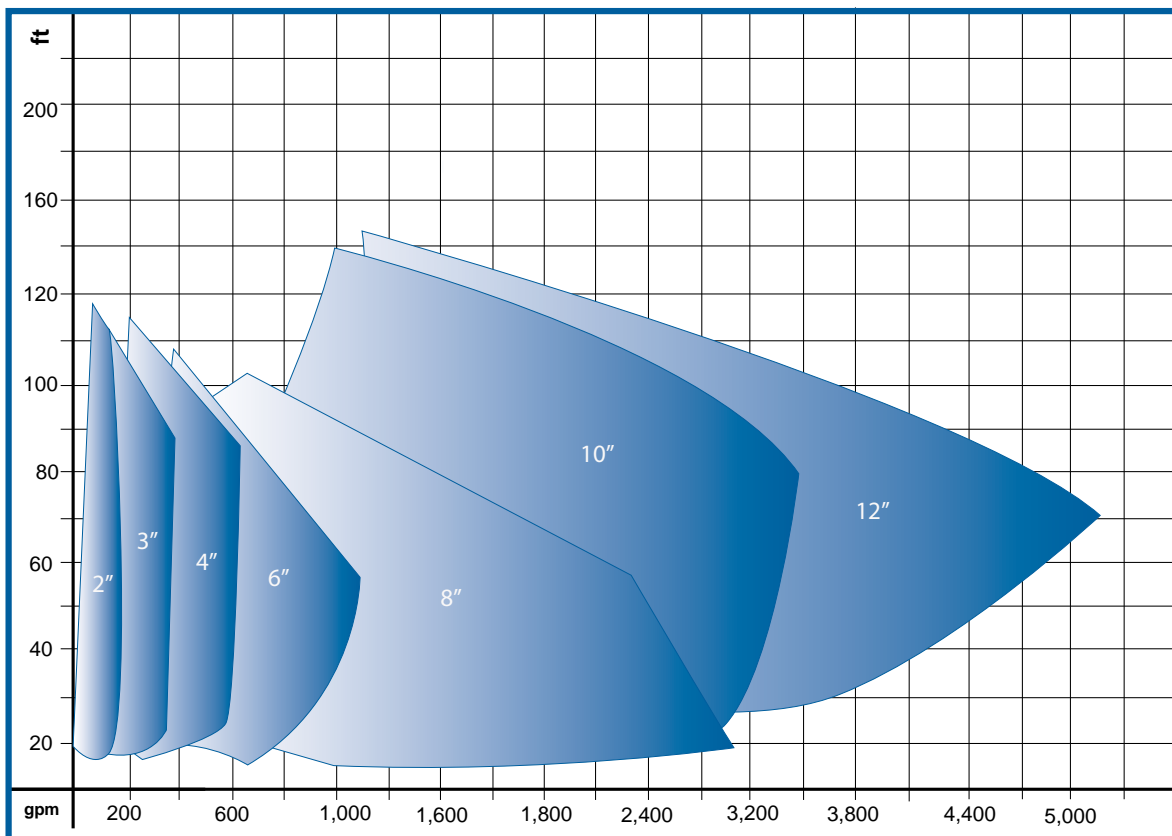
Pusher bolt holes allow for removal of the rotating assembly with out the disturbing piping.



Selection Chart

Selection Chart SWP

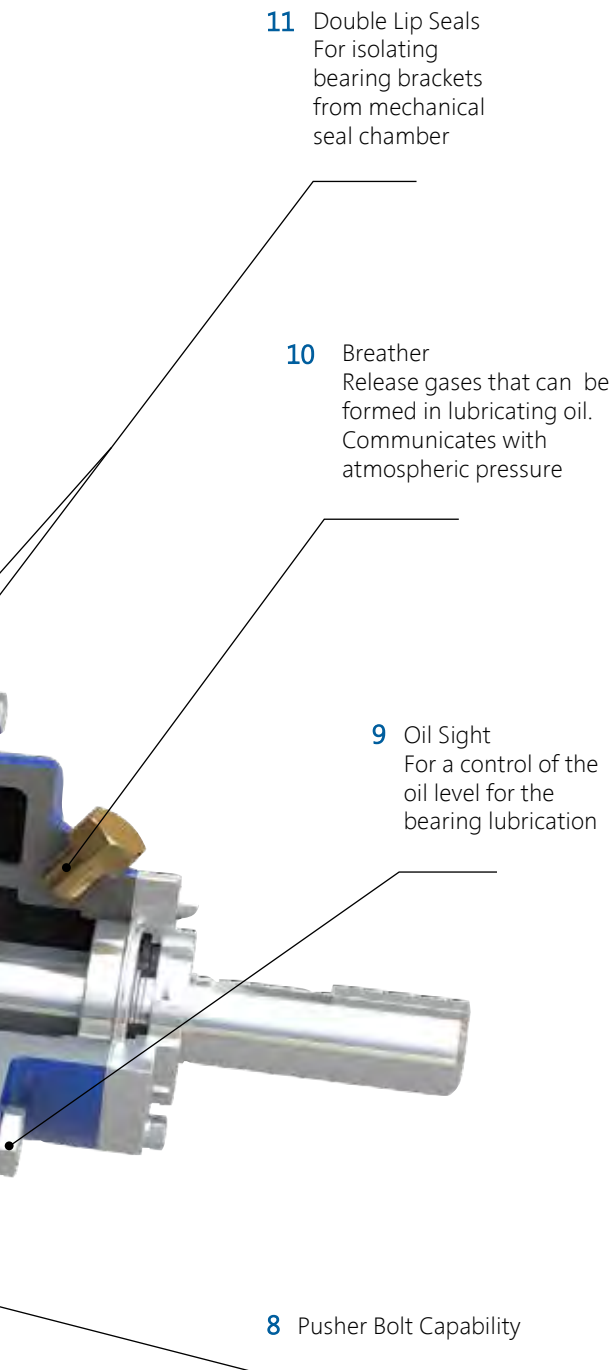
Various Poles
50 & 60 HZ



Characteristics

-
- 1** Discharge Flange
Up to 8"
 - 2** Suction Check Valve
Rubber that avoids the priming chamber to empty
 - 3** Removable Cover Plate
Allows easy maintenance to remove solids that may build up during operation
 - 4** Handles
Allow the complete rotation of the removable cover plate
 - 5** Wearplate
Easy to replace
 - 6** O-Ring Seal
Divides the self priming pressure from the discharge pressure
 - 7** Balanced Impeller
Two vane semi open impeller that can handle up to 3" solids
 - 12** Mechanical Seal
Oil lubricated

Description



PRODUCT DESCRIPTION

- Self Priming Pump
- Easy maintenance without the need of disconnecting piping
- Easy access to impeller and seal.
- Availability of mounting above the liquid being pumped.
- Designed to allow up to 3 inch diameter solids.
- Lift up to 27 ft

BROAD APPLICATION RANGE

The SWP pump is designed for a wide range of waste handling applications for industries such as but not limited to:

- Steel
- Paper Mills
- Mining
- Food Processing
- Power Plants
- Automotive
- Wineries

MATERIAL OF CONSTRUCTION

- Cast Iron
- We cover a large range of material options to satisfy every need, please contact us for more information.

SWP PERFORMANCE DATA

Capacity	up to 1,440 m ³ /h	5,280 U.S. gpm
Head	up to 45 m	147 ft
Solids Diameter	up to 7.62 cm	up to 3 in
Lift	up to 8.2 m	up to 27 ft
Temperature	up to 70 °C	up to 158 °F

Note: For Pump operation outside this range, please contact a Ruhrpumpen representative.

Benefits

Bearing's dual protection

The double bearing lip seal prevents mixing the bearing chamber oil with the mechanical seal chamber oil. Between the two lip seals is an atmospheric drainer that allows the oil to drain outside of the pump in case of leak.

Two vane impeller

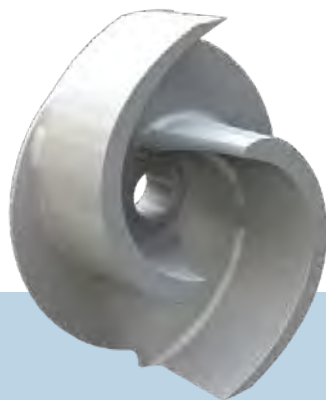
The two vane semi opened impeller can handle up to 3" diameter solids.

Removable cover plate

The SWP design, with it's removable cover plate, reduces maintenance downtime and makes the opening simple and comfortable for the operator, with two handles to rotate the cover plate.

Double oil sight

For a better control of the bearing bracket oil level and the mechanical seal chamber oil level from the outside of the pump.



**TWO VANE
IMPELLER**



**DOUBLE
OIL SIGHT**



**REMOVABLE
COVER PLATE**



Other Ruhrpumpen Products

ANSI Horizontal Process Pump



CPP - Single Stage end suction horizontal centrifugal pump, enclosed impeller, radially split casing with flanged connections.

Petrochemical, Oil & Gas, Steel Industry, Automotive, Food Processing, Power Generation, Pharmaceuticals, Water Treatment, General Process.

Vertical Turbine Pump



VTP - Multistage vertical centrifugal pump with diffuser type bowl, semi-open / enclosed impellers, cast iron bowls, counterclockwise rotation viewed from coupling end.

Deep well and irrigation, cooling tower, sump, condensate, can pump requirements.

Vertical In-Line Pump



IVP - Split-coupling, flanged suction and discharge on common centerline, up to 350 psi, fully enclosed, impeller with hydraulic balance which prevents vibration, radially splitcase.

Fire Service, Air Conditioning Systems, Condensed Water, Ice Water, Service Water, Ocean Water, Building Water Supply Systems.

Sump Pump



VSP - Single Stage single suction vertical centrifugal pump, volute type case, flanged and threaded discharge, cast iron casing, flexible coupling.

Sump Drainage, Flood Control, Air Wash Systems, Power Plants, Chemical Industry, Municipal Systems, Water Treatment, Process Plants, Sewage Lift Stations.

Horizontal Process Pump



IPP - Horizontal process pump, fully opened impeller, up to 375 psi.

Chemical, Pharmaceutical, Metal Workings, Automotive, Power Generation, Water & Waste Treatment.

Horizontal Split Case Pump Single Stage



HSD - Single stage double suction horizontal centrifugal pump, foot mounted, oil or grease lubricated bearings. Dewatering, Mining, Water, Fire service, Cooling Towers, Municipal, Oil Process, Petrochemical, Sugar Industry, Paper Industry, Pipeline, Power Generation.

+65 years creating the pumping technology that moves our world

Ruhrpumpen is an innovative and efficient pump technology company that offers highly-engineered and standard pumping solutions for the oil & gas, power generation, industrial, water and chemical markets. We offer a broad range of centrifugal and reciprocating pumps that meet and exceed the requirements of the most demanding quality specifications and industry standards such as API, ANSI, UL, FM, ISO and Hydraulic Institute.

